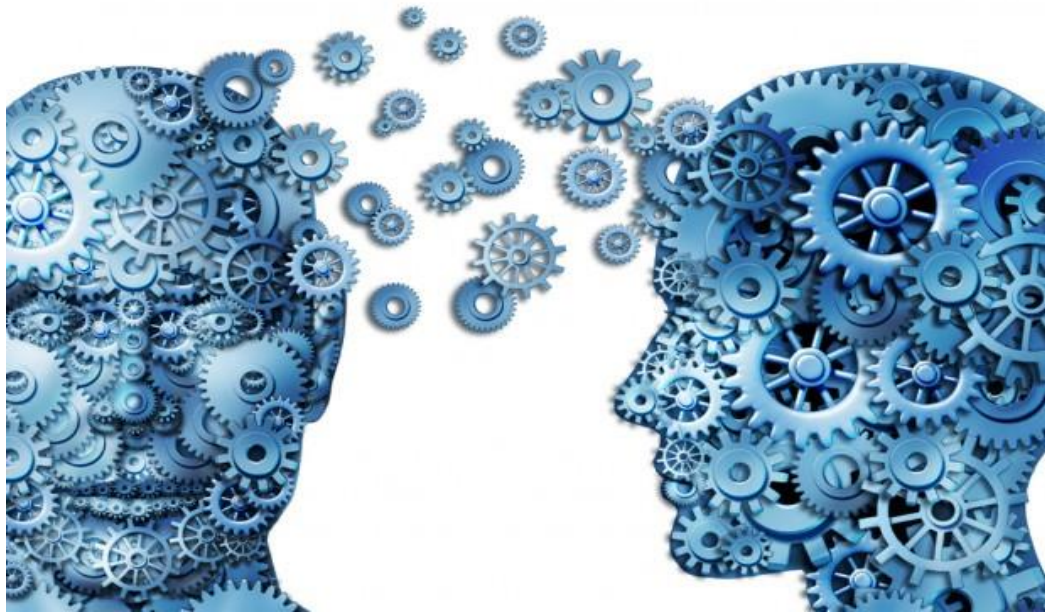


# APD REMINDER 1



**Not all information  
heard will be  
understood or retained**

# APD REMINDER 2



Speech gets lost  
in noise

Text © Alyson Mountjoy 2017. All rights reserved

# APD REMINDER 3



Unclear voices and unfamiliar voice patterns are harder to process, as are unfamiliar accents

# APD REMINDER 4



**Facing the person with  
APD aids effective  
communication**

Text © Alyson Mountjoy 2017. All rights reserved

# APD REMINDER 5



Processing deficits lead  
to gaps in knowledge

Text © Alyson Mountjoy 2017. All rights reserved

# APD REMINDER 6



Sequencing problems  
make shaky  
foundations  
to build upon

# APD REMINDER 7



**Delayed processing can lead to slow working and unfinished tasks**

# APD REMINDER 8



**Taking dictation means  
notes are often  
incorrect or incomplete**



# APD REMINDER 9



**Pre-teaching and  
printed materials are  
vital to a learner with  
APD**

# APD REMINDER 10



Too much noise and  
information leads to  
sensory overload

# APD REMINDER 11



**The brain needs silence  
and rest for delayed  
processing/recovery**

# APD REMINDER 12



**Only a specialist audiologist is qualified to diagnose APD – and only parents can seek referral**